

POLIMI PIACENZA CAMPUS

29th August
14th September

OC 2018 9th EDITION

FREESPACE DISCUSSION VENEZIA 01.09.2018



POLITECNICO
MILANO 1863

SCUOLA DI
ARCHITETTURA URBANISTICA
INGEGNERIA DELLE
COSTRUZIONI



9th EDITION 29 AUGUST / 14 SEPTEMBER 2018
Piacenza Campus Arata

8
CFU

DIRECTION

Guya Bertelli - Polimi
with

Carmen Andriani - Unige
Carlos García Vázquez - ETIAS
Sara Profsoni - Polimi



POLITECNICO DI MILANO
Scuola di Architettura, Urbanistica e Ingegneria delle Costruzioni
Polo Territoriale di Piacenza
Via Sabotini 113 - 29100 Piacenza - Italy

OC - Open City

INTERNATIONAL SUMMER SCHOOL
WORKSHOP IN ARCHITECTURE AND URBAN DESIGN
oc.summerschool@gmail.com
www.intschool.polimi.it

LANDSCAPE 4.0

Biennale Sessions

LA BIENNALE DI VENEZIA
Arte
Architettura
Cinema
Danza
Musica
Teatro
Archivio Storico

Biennale
Architettura
2018

Venezia
26.05—25.11

Giardini and Arsenale
Orario / Opening Hours
10am—6pm
Chiuso il Lunedì
Closed on Mondays

IMPSPSPPE4.0
school
Piacenza 2018
Summer
Open City

BIENNALE SESSIONS September 1st

XVI BIENNALE DI ARCHITETTURA
SALE D'ARMI G - ARSENALE
VENEZIA

6.30 am

Departure from Piacenza by reserved buses
Meeting point: Piazza Stazione FS Piacenza

10.30 am

Arrival in Venezia (Tronchetto)
Reserved boat to Arsenale

11.30 am

Entrance in Biennale di Architettura (Arsenale Venue)
Start of FREESPACE DISCUSSION (Sale d'Armi G)

PANEL BOARD

OC Directors:
Guya Bertelli, Sara Protasoni

Special guests:
Chiara Bertoli, Martino Mocchi
with groups' supervisors and tutors

3.00 pm

Visit to FREESPACE EXHIBITION
edited by Grafton Architects

6.30 pm

Departure from Venezia

10.30 pm

Estimated arrival in Piacenza

PROGRAM

Biennale
Sessions

Biennale Venezia
Architettura 2018 26.05—25.11

 **POLITECNICO
MILANO 1863**

POLITECNICO DI MILANO
Scuola di Architettura Urbanistica Ingegneria delle Costruzioni
Polo Territoriale di Piacenza
Via Scalabrini 113 - 29100 Piacenza - Italy

FREESPACE DISCUSSION

Coordination: Michele Roda

PRESENTATION

1ST STEP

AN IDEA FOR LANDSCAPE 4.0

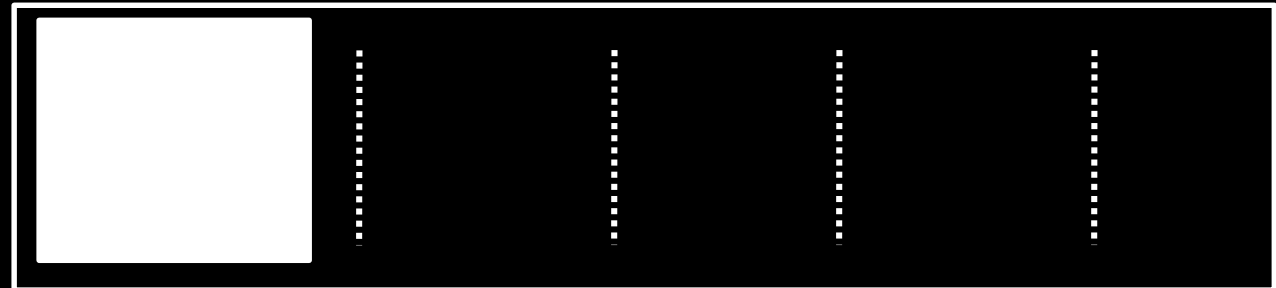
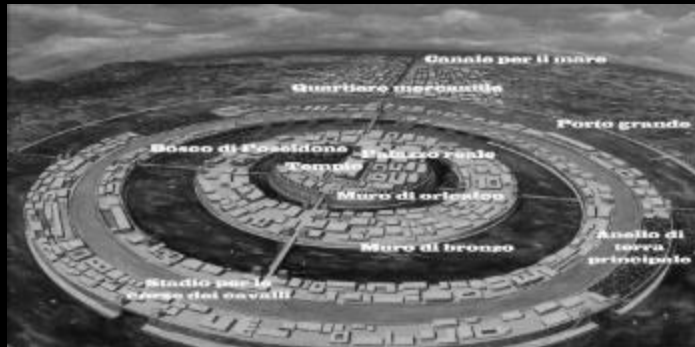
PROJECT AS STORY

Focusing on the key words each of the three groups has to define an idea of CITY – MANIFESTO, referred to the Landscape 4.0 (Piacenza 2050), that has to communicate principles, paradigms, concepts, ideas.

This MANIFESTO will be the platform where the project will test the idea.

City Idea

.....in form of narration



To communicate Landscape 4.0 vision through **6 images** able to transmit the interpretative model.

The images are called to discuss the complexity level of the urban dimension. It's an approach stage where the team groups can propose **Landscape 4.0** main figures through a digital drawing and modelling.

The design technique is up to each group (**collage, rendering, video**).



STEP 1

VIRTUAL DIMENSION
IDEA/CONCEPT



Biennale Sessions

Biennale Architettura 2018
Venezia 26.05-25.11



- OC Michele Rosta
- OC Marco Ruffini
- OC David Laing
- OC Guya Bertoli

Biennale Sessions

La Biennale di Venezia
Arte
Architettura
Cinema
Danza
Musica
Teatro
Archivio Storico

Biennale
Architettura
2018

Venezia
26.05 – 25.11

Giardini and Arsenale
Orario / Opening Hours
10am – 6pm
Chiuso il Lunedì



OC
Gaya Bertoli

OC
Chiara Bertoli

OC
Martino Mocchi

OC
Michele Roda

OC
Sara Protasoni

OC
LANDSCAPE 4.0
FREESPACE DISCUSSION

TECHNICAL SESSIONS	10:00-11:00
10:00-11:00	Chiara Bertoli, Sara Protasoni
11:00-12:00	Chiara Bertoli, Martino Mocchi
12:00-13:00	Chiara Bertoli, Sara Protasoni
13:00-14:00	Chiara Bertoli, Sara Protasoni
14:00-15:00	Chiara Bertoli, Sara Protasoni
15:00-16:00	Chiara Bertoli, Sara Protasoni
16:00-17:00	Chiara Bertoli, Sara Protasoni
17:00-18:00	Chiara Bertoli, Sara Protasoni
18:00-19:00	Chiara Bertoli, Sara Protasoni
19:00-20:00	Chiara Bertoli, Sara Protasoni
20:00-21:00	Chiara Bertoli, Sara Protasoni
21:00-22:00	Chiara Bertoli, Sara Protasoni
22:00-23:00	Chiara Bertoli, Sara Protasoni
23:00-24:00	Chiara Bertoli, Sara Protasoni

OC
LANDSCAPE 4.0
FREESPACE DISCUSSION

8 CFU

OC-Open City
INTERNATIONAL DESIGN SCHOOL
www.ocopen-city.it



OC Michele Roda

OC Martino Mocchi

Biennale

PIACENZA: THRESHOLDS IN SEQUENCE

The project for north Piacenza and regeneration of 3 military assets through a sequence of cracks is a shaping sign of a new urban nature, linking the transition between local and global scale, also linking the transition between historical urban city core and abandoned river banks. With this vision Piacenza can undertake a deeper and wider process, especially with regards to its relevant relationship with the Po river, that contributed to Piacenza's history, and its economic and cultural development. The set of proposed actions and interventions aims at becoming local landmarks, while working holistically at both landscape and territorial level so to propose best practices that will reshape the area in a safe and permanent cultural and educational productive space.

The strategic program's objective is twofold:

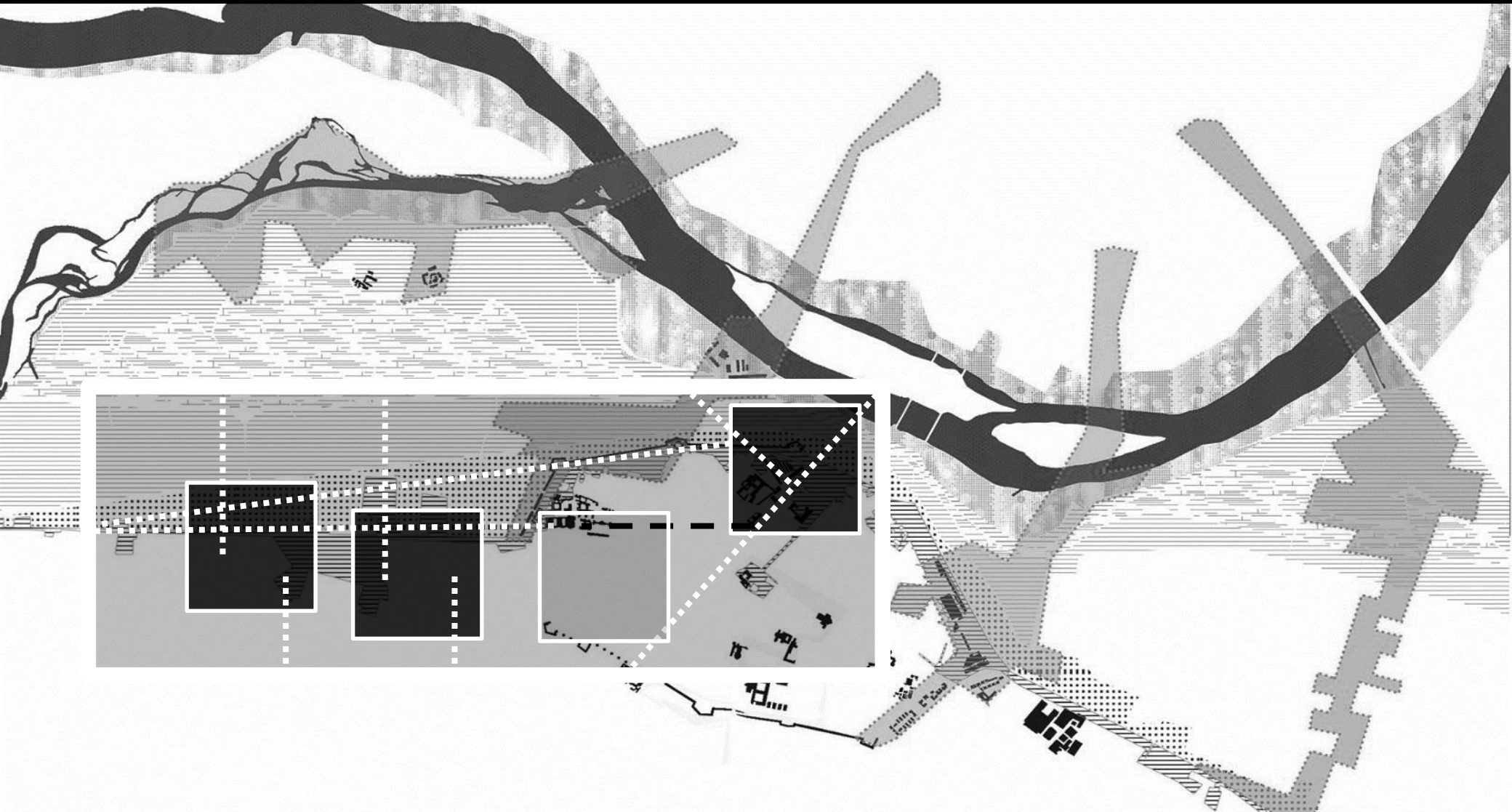
1. providing Piacenza with a new visibility with respect to territorial flows, foster and strengthen a new city brand, create a water

approaching point that could connect the local territory to others along Po river;

2. provide the community with new urban spaces, bring the community closer to river Po landscape and environment, that have always been part of Piacenza and its identity. The overall strategy comprises a set of specific actions that delineate scenarios along urban river-to-city links.

More in detail, the location of the three barracks, aligned with the old via Emilia route, is due to an internal growth plan. Their position, once external, nowadays within city's urban edges, is surrounded by a tight and consolidated urban fabric, poses the challenge of how to regenerate such barracks once external to make them central in Piacenza's context. And to use them as active factors of a re-direction of the city itself along the Via Emilia Pavese (west) axis.

FOCUS MILITARY AREAS
LOCAL SCALE PIACENZA CITY AND ITS NORTHERN LIMIT
THE RIVER AND THE CITY
VISION FOR A REGENERATION OF NORTHERN INTERNAL LIMIT
MILITARY ASSETS AXIS AS REFERENCES OF NORTH-SOUTH
ENVIRONMENTAL INTERFERENCES AND ECOLOGICAL CORRIDORS



TOWARDS AN INNOVATIVE LANDSCAPE

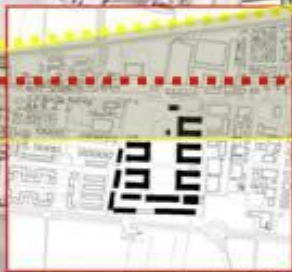
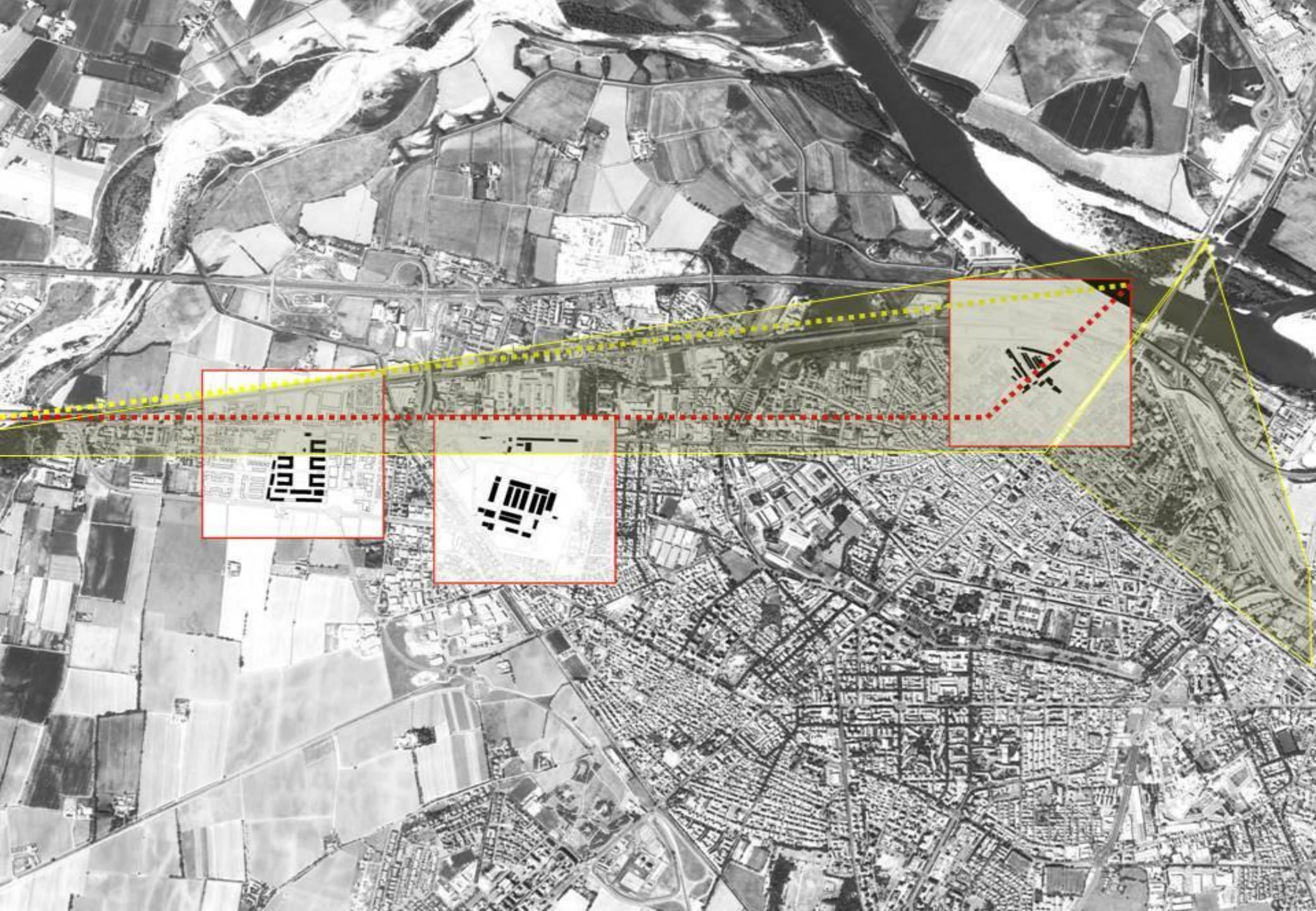
Consequently, there are some potential advantages: firstly, the presence of connections such as links with riversides, freeway and railway network, that despite their current role of separators could become **joints** of the strip of land between the river Po and the city. It is clear, then, that challenges are as complex (what to do with abandoned military areas) as suggestive (presence of old buildings and traces of old constructed patrimony). Such preamble is useful to deal with some problems that currently those areas are facing. Their restoration to a stage that military areas are integrated in the urban fabric could potentially facilitate the promotion of **mixed functionalities** (culture, research, university, commerce, business, social services) **for a wide range of users** (students, workers, researchers, professors, artists, designers).

All these users are the foundation for what Richard Florida called **creative class**, a complex group of human beings that producing shapes and designs for the contemporary cities, is a new

economic engine. As other citizens, this group demands **high quality urban spaces, lively enclaves, that allow for interactions**. These are the objectives of OC proposal for military areas in Piacenza: to learn from mistakes of the past and to change following contemporary city principles, so to pave the way towards a **new model of ecologically sustainable city, socially sensitive and with roots in urban places**.

From a spatial-dwelling standpoint, the preserved **availability** of military areas allows for a wide reflection on the extended meaning of the urban designer. If systemic characters are recognized for the city, it is necessary to critically evaluate how many and what element contributed to nowadays city's shape.

Historical city modified in recognizable stages, slowly, so that the physical pattern could adapt and stabilize even as a consequence of radical changes (the same can be seen in other Italian and European cities).



The OC 2018 edition, in continuity with the themes dealt during the previous editions, focuses the attention on the multiple and complementary forms of integration between landscape and society. Sharing is proposed as a key word for the transformative processes of contemporary landscapes and territories. Only a careful research for identities of places, where local communities can be recognized and rediscovered, allows us to reach a quality that integrates spatiality with the sense of sociality. Along this background, the direction and the coordination of the workshop identifies some paradigmatic places in the enlarged territory of the city of Piacenza, taken as an exemplary case-studies of contemporary conditions. Deeply, the landscapes the School is proposing to students as a basis for discussion and comparison - complex and interdisciplinary - and as object of the design experimentation, correspond with some abandoned military areas of the city that build an interacting and multi-scale sequence along

the axis of Via Emilia Pavese: Pontieri Laboratory, Pertite Barracks, Lusignani Barracks. Because of their location on the northern edge of the city and at the same time in contact with the fluvial areas of the future Po River Park, the regeneration (physical-spatial, socio-economic, technical-infrastructural) of these 3 urban places can be intended as an opportunity for a wide rethinking and re-interpretation of the relationships among architecture-city-landscape in the contemporary reality. The design work for visions that joins spatiality and sociality is in many ways one of the most stressed frontier of current disciplinary research at international level and will be addressed here without limits of scale in a renewed and continually fluctuating relationships among the local and the global scale, without *a priori* functional definitions.

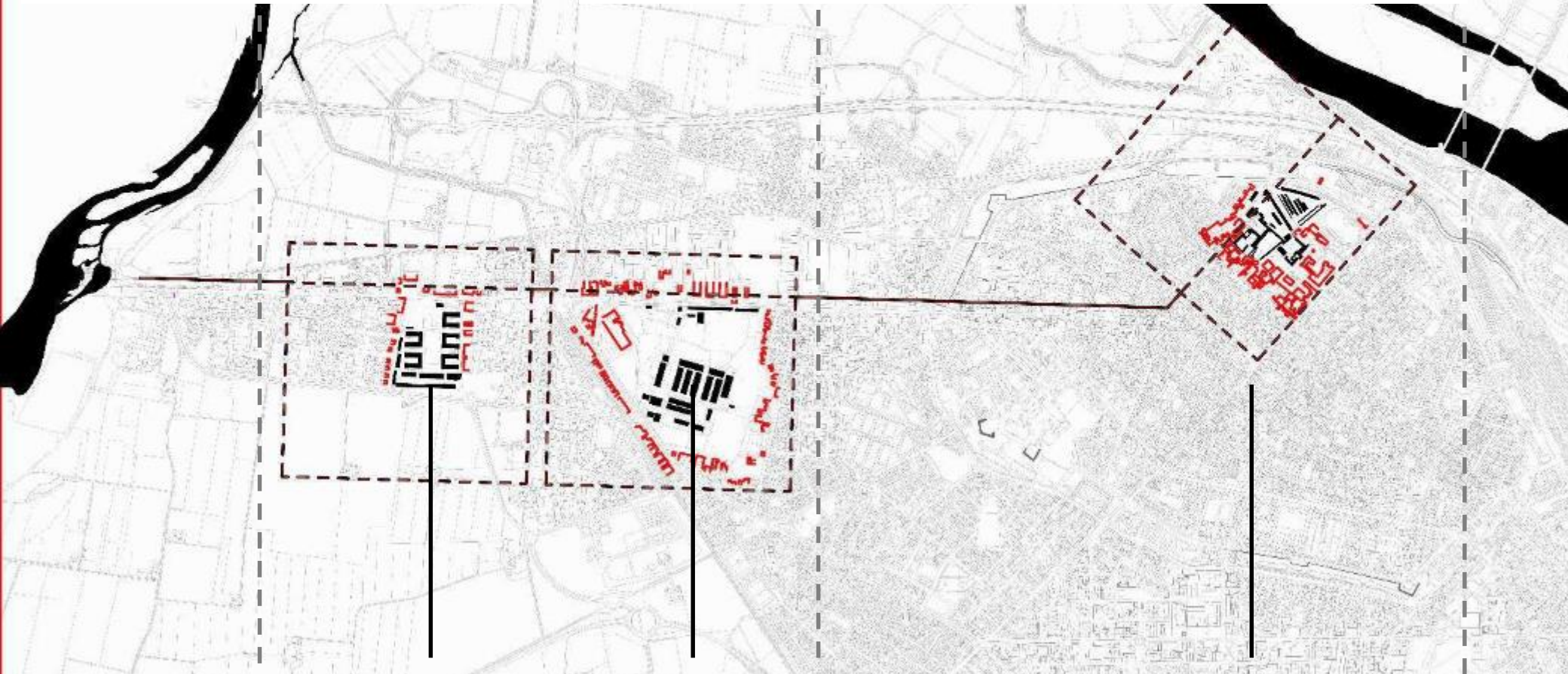
LANDSCAPE 4.0

G-LOCAL SCENARIO

Housing & Sustainability

Energy & Agriculture

Innovation & Culture



HOUSING-ECO-CLUSTER

ENERGY-NATURE-PARK

SMART-URBAN-HUB

LANDSCAPE 4.0

SHARING SPACES FOR THE FUTURE PIACENZA

AREA 1
GROUP 1

#8
LAB PONTIERI



AREA 2
GROUP 2

#28
CASERMA PERTITE



AREA 3
GROUP 3

#30
CASERMA LUSIGNANI



DESIGN TEAMS

GROUP 1

Supervisors

Giovanni Carli, Luciana Macaluso, Roy Nash

Tutors

Giulia Cazzaniga, Giulia Garbarini, Laura Parrivecchio,
Isabella Spagnolo

PROJECT TITLE

GROUP 2

Supervisors

Chiara Locardi, Mario Morrica, Francesca Schepis

Tutors

Michele Bagnato, Federica Marchetti, Sara Sapone,
Doaa Salaheldin

GROUP 3

Supervisors

Kiana Jalali, Laura Pujia, Martina Sogni

Tutors

Andrea Cappelli, Mina Ghorbani, Ester Rachele
Mussari, Nicola Petaccia, Hassan Moataz Samir



Biennale
Sessions

OC Sara Protasoni

OC Chiara Perrotti

OC Martino Mucchi

OC Michele Roda

OC Sara Protasoni

THE AS NO
LANE B

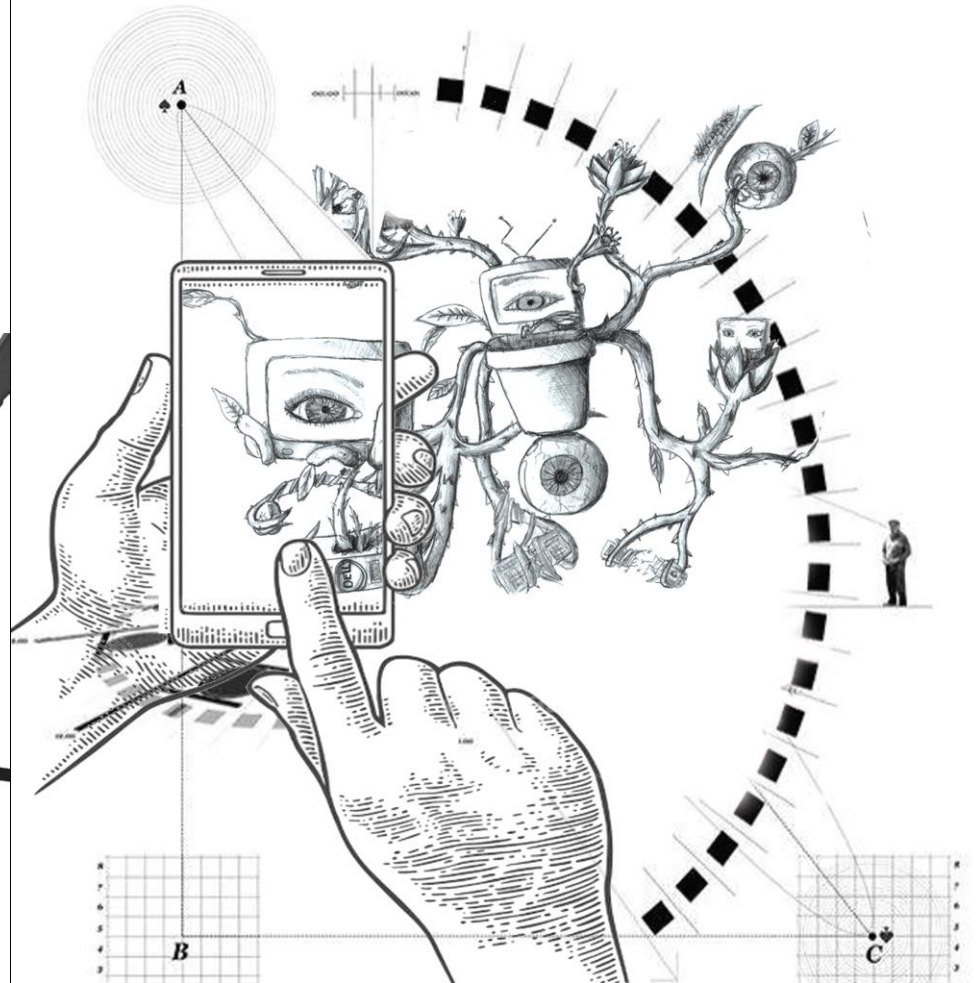
OC

OC

OC

OC

OC





DESIGN TEAMS

GROUP 1

Supervisors

Giovanni Carli, Luciana Macaluso, Roy Nash

Tutors

Giulia Cazzaniga, Giulia Garbarini, Laura Parrivecchio,
Isabella Spagnolo

GROUP 2

Supervisors

Chiara Locardi, Mario Morrica, Francesca Schepis

Tutors

Michele Bagnato, Federica Marchetti, Sara Sapone,
Doaa Salaheldin

GROUP 3

Supervisors

Kiana Jalali, Laura Pujia, Martina Sogni

Tutors

Andrea Cappelli, Ester Rachele Mussari,
Nicola Petaccia, Hassan Moataz Samir

PROJECT TITLE

explosion



SUPERVISORS

Oliver Linnell | Maria Herrera | Francesca Salegh

www

Arbuckle Engelen | Pauline Mandant | Sara Anna Engelen | Diana Schickels

press

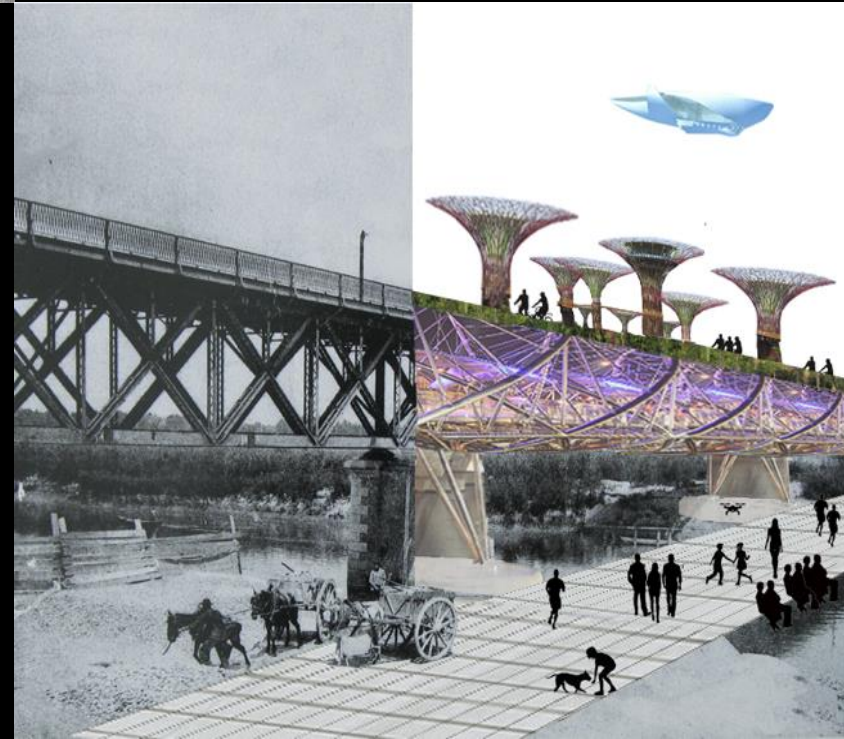
Die Tasse | Sarah Wille | Caroline Borch | Glen N
Tom | Clara W | Stefan Hansen | Die Wachtel |
Felix Asselmeier | Tobias Kallweit | Lena
Fornal | Heide | Daniel
Linnell | Heide | Daniel
Linnell | Heide | Daniel
Linnell | Heide | Daniel

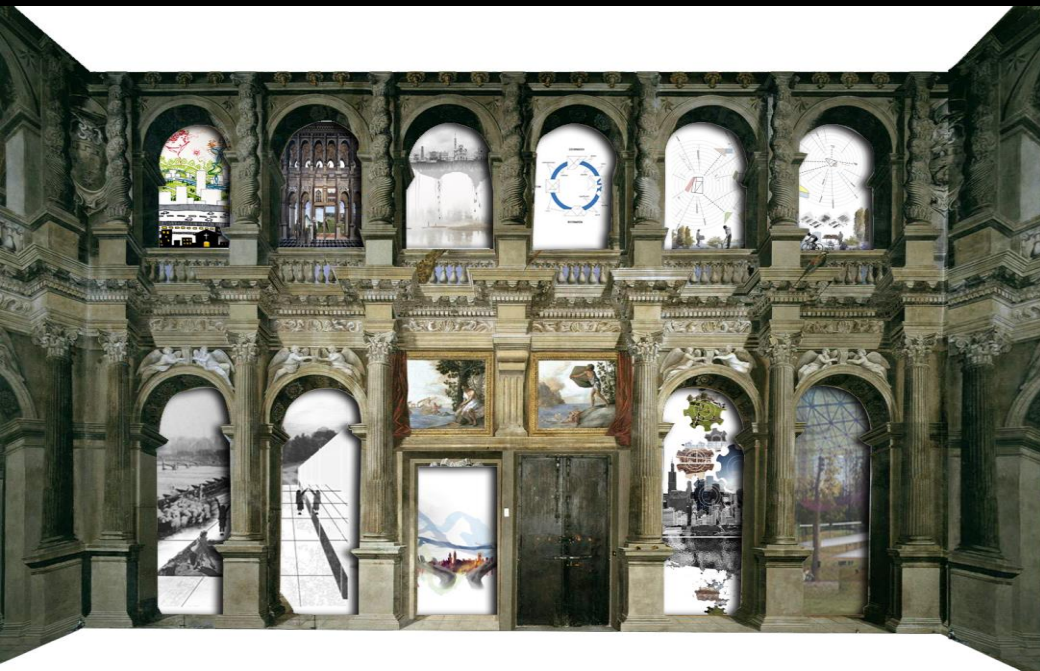
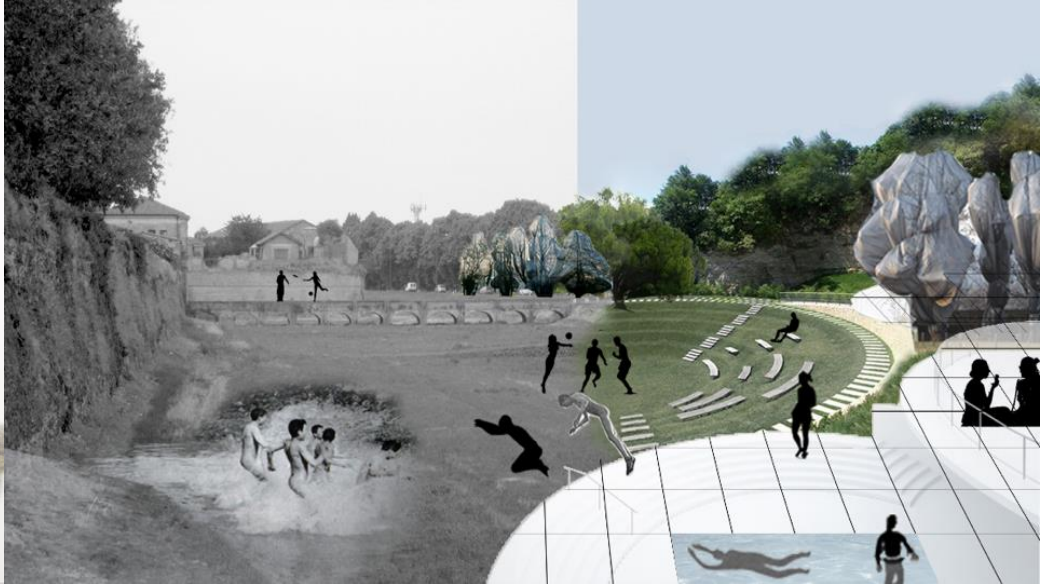
Biennale
Ossession





1. **EXPLOSION** - fragmentation | activation | permutation
2. **OVERLAPPING** - interaction | floating | artificial intelligence
3. **BALANCE** - filtering | time lapse | hybridization
4. **GROW BEYOND REALISM** - adaptation | gear | distortion
5. **BREATHING PLATFORM** - transition | connectivity | reforestation
6. **INTERACTIVE LANDSCAPE** - integration | cooperation | communication
7. **INNOVATIVE CONSERVATION** - Static | dynamic | fluid
8. **DUCTILE FRAGILITY** - Anti-cluster | diversification | re/de-construction





EXPLOSION OVERLAPPING INNOVATIVE CONSERVATION GROW BEYOND REALISM
INTERACTIVE LANDSCAPE BREATHING PLATFORM DUCTILE FRAGILITY BALANCE

DESIGN TEAMS

GROUP 1

Supervisors

Giovanni Carli, Luciana Macaluso, Roy Nash

Tutors

Giulia Cazzaniga, Giulia Garbarini, Laura Parrivecchio,
Isabella Spagnolo

GROUP 2

Supervisors

Chiara Locardi, Mario Morrica, Francesca Schepis

Tutors

Michele Bagnato, Federica Marchetti, Sara Sapone,
Doaa Salaheldin

GROUP 3

Supervisors

Kiana Jalali, Laura Pujia, Martina Sogni

Tutors

Andrea Cappelli, Ester Rachele Mussari,
Nicola Petaccia, Hassan Moataz Samir

PROJECT TITLE

**infinity-
scapes**

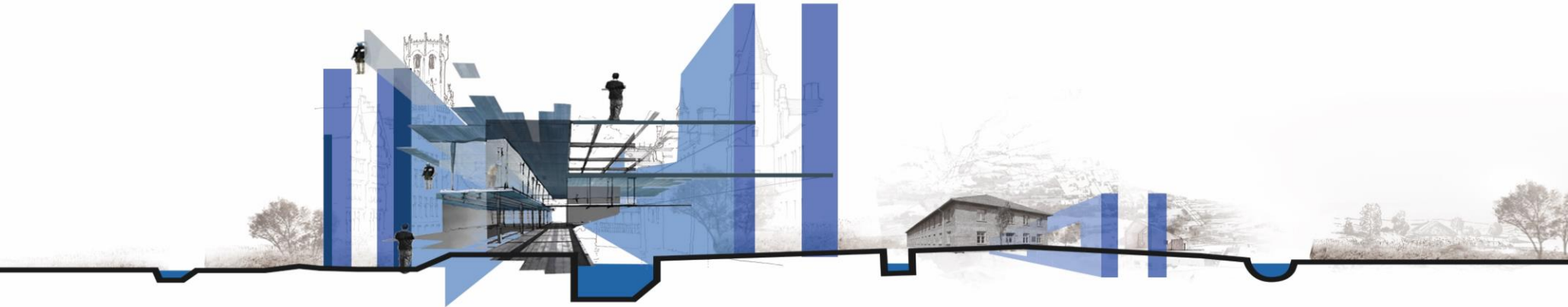
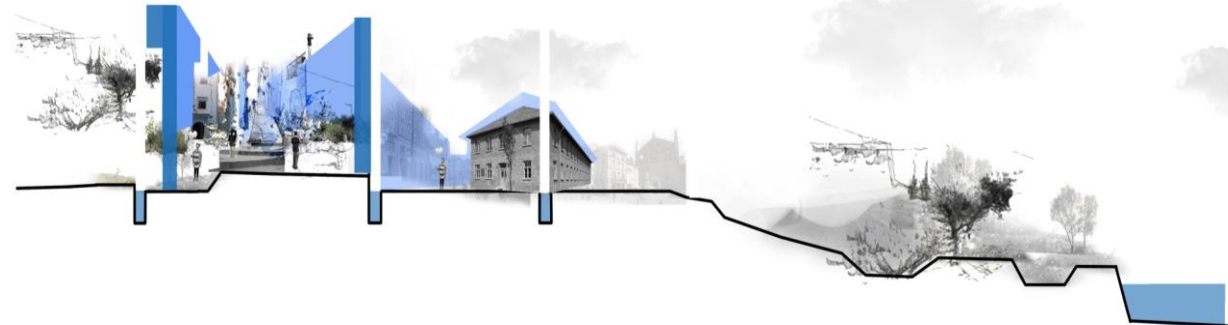
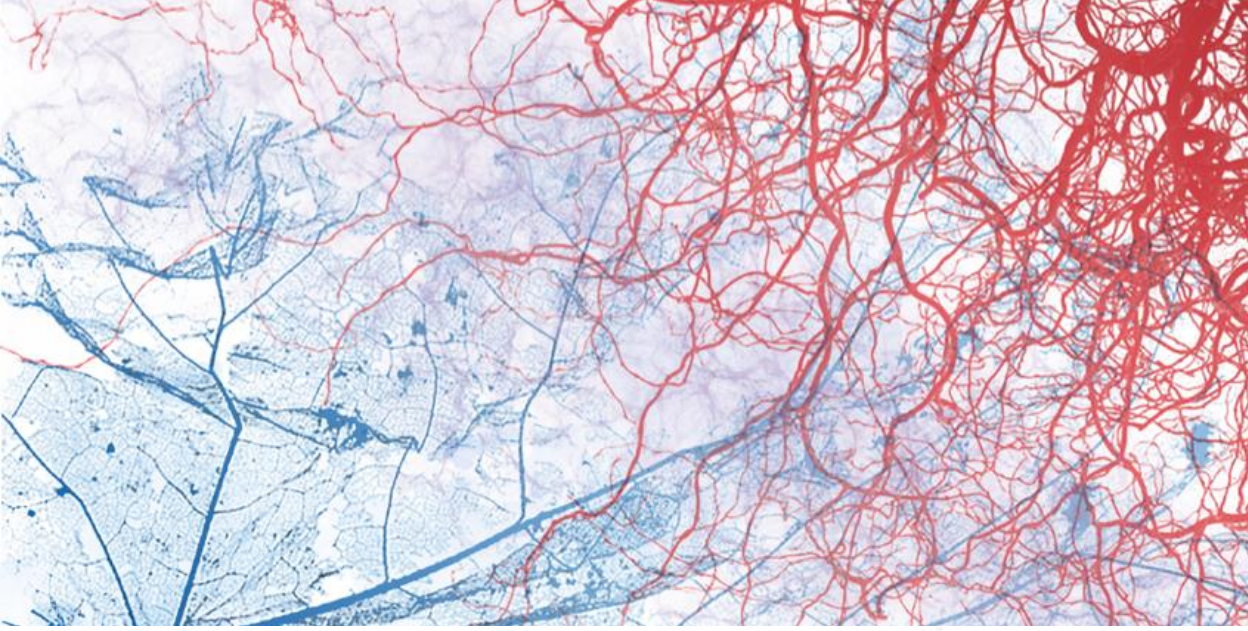


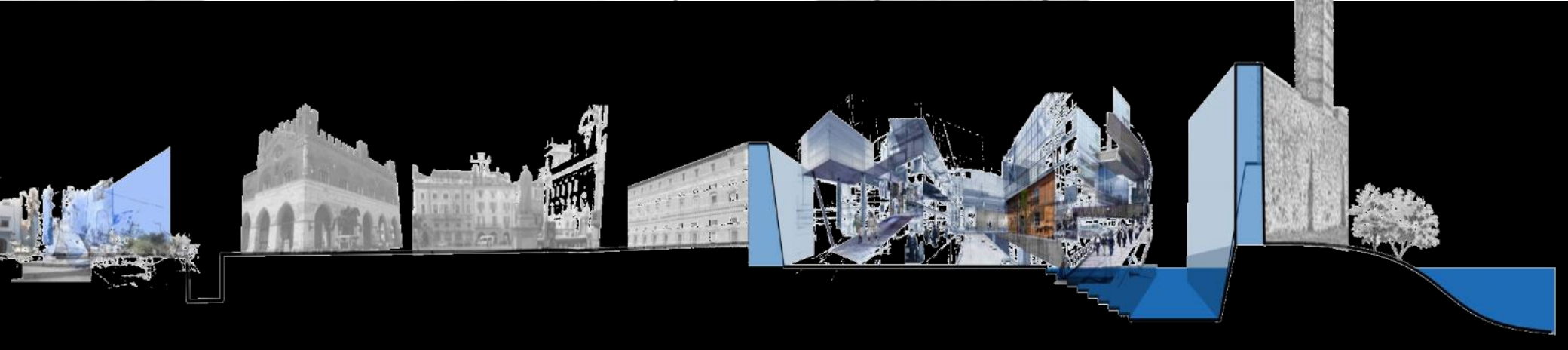
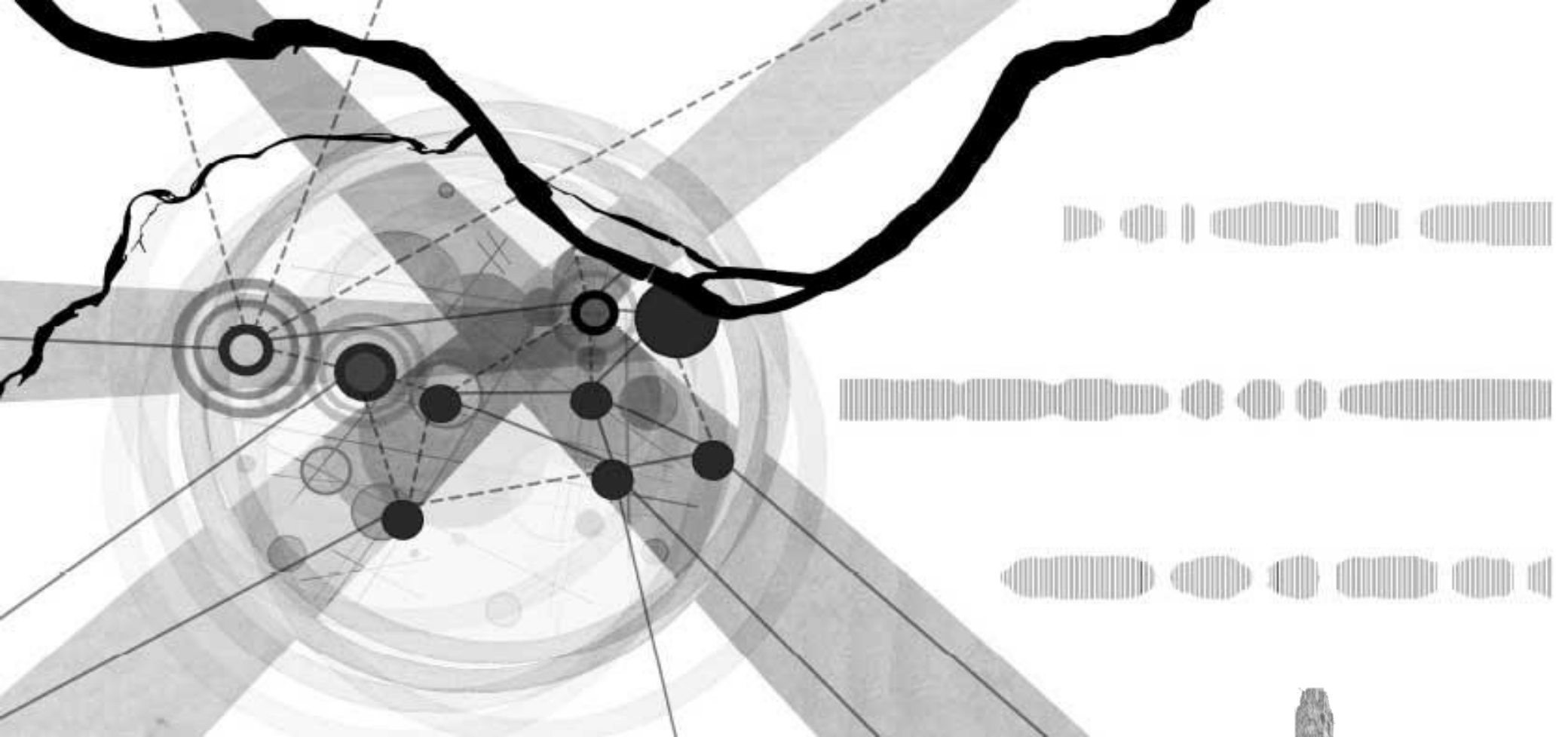
NEC

Biennale
Session

WHY?
WHY?
WHY?
WHY!!

Marina Mucchi
Michele Roda
Lara Profumo







8 CFU

DIRECTION

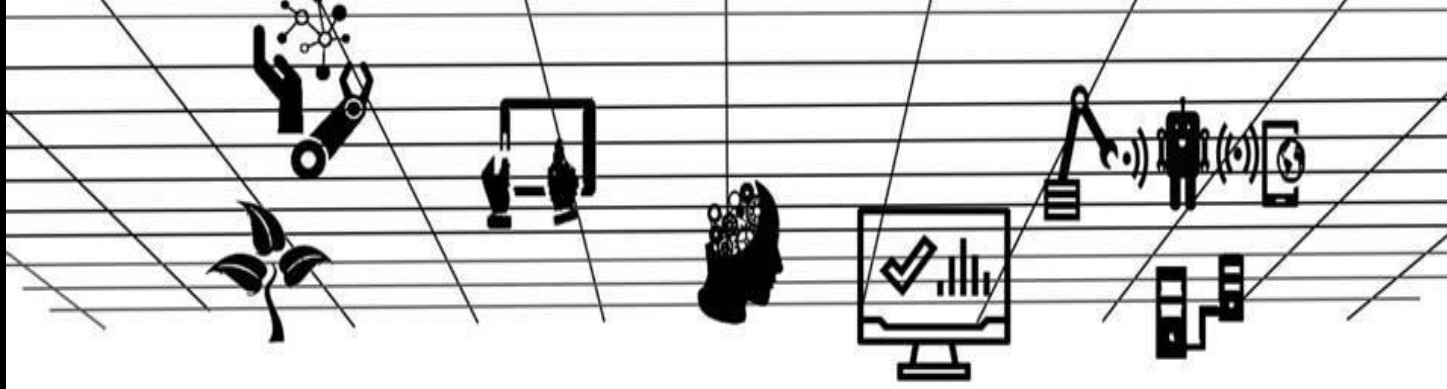
Guyra Benelli
Carmen Andriani
Carlos Garcia Vásquez
Sara Profarini

oc-Open City
INTERNATIONAL SUMMER SCHOOL
WORKSHOP IN ARCHITECTURE AND URBAN DESIGN

oc.summerschool@gmail.com
www.intschool.polimi.it

LANDSCAPE 4.0

NEXT STEP
08.09.2018
MID-TERM
CRITIC



LANDSCAPE 4.0